

Are the Nordics Getting Tough on Crime?

— And if so, how to measure these changes ?

Tapio Lappi-Seppälä

University of Helsinki, Institute of Criminology and Legal Policy

NSFK working group- Helsinki 1-2 October 2016

How to measure "toughness"

1. The punitive direction of legislative activities (what the governments have done)
2. Political speech (what the politicians promise to do)
3. The use of prison (the toughest punishment)
4. The use of other sanctions (the extent of penal control)
5. The intensity and effectiveness of CJ-process: detection -> pre-investigation -> prosecution -> sentencing -> enforcement
6. Enforcement practices, prison conditions & experiences (what does the prison mean)
7. Police behaviour & respect of human rights
8. Social control exercised by other branches civil & administrative law (immigrants)
9. Public attitudes & sentiments (what do the people think)
10. ...

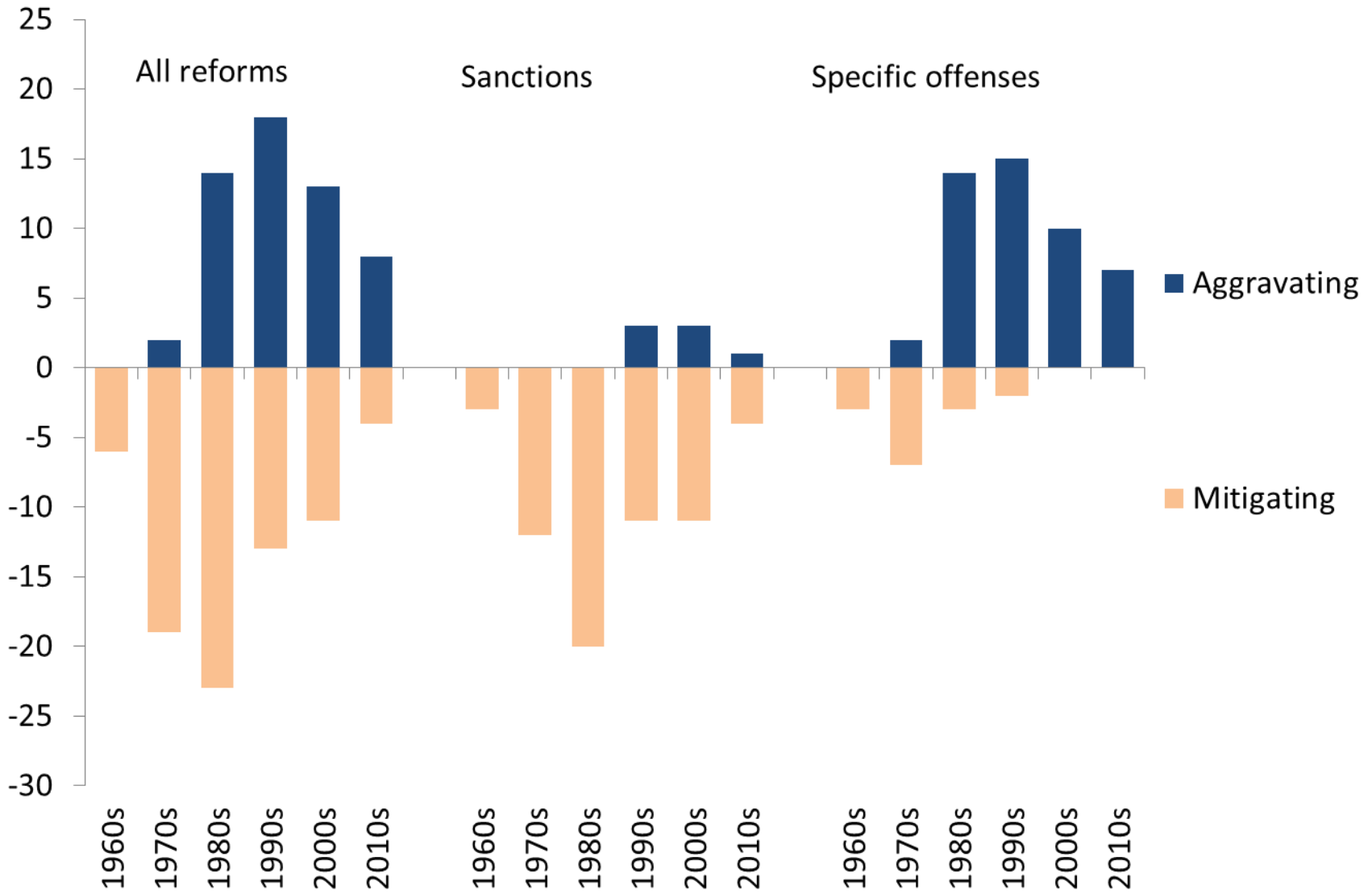
1. In terms of legislation the Nordics changed the course during the 1980s – or a bit later (Finland)

Clear division of labour:

Toughness with specific offenses

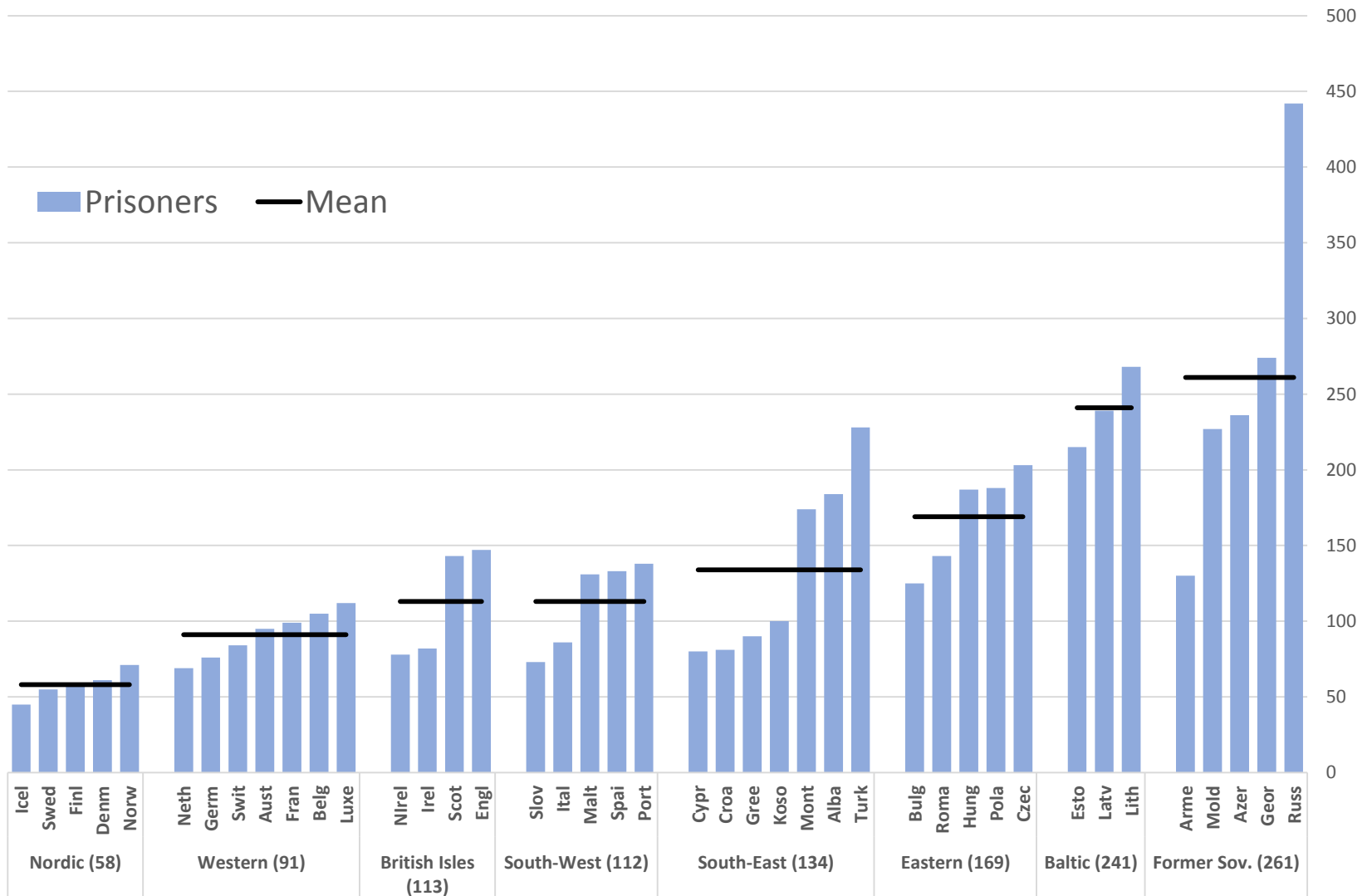
Moderation with the sanction system

Law reforms in four Nordic countries from late 1960s to early 2010s

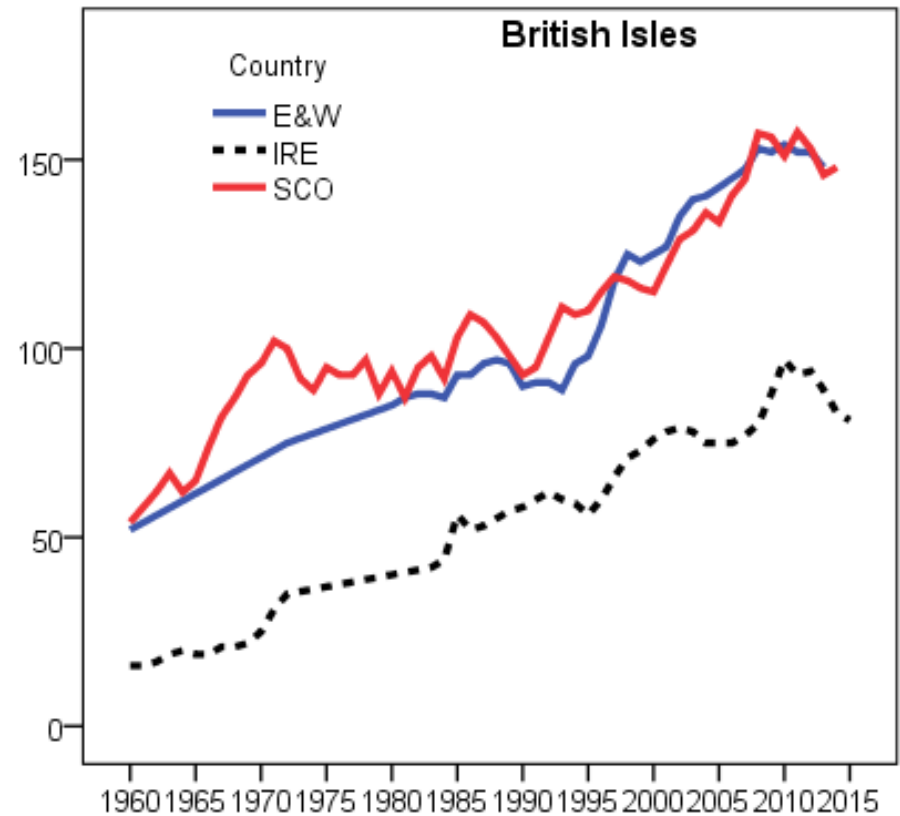
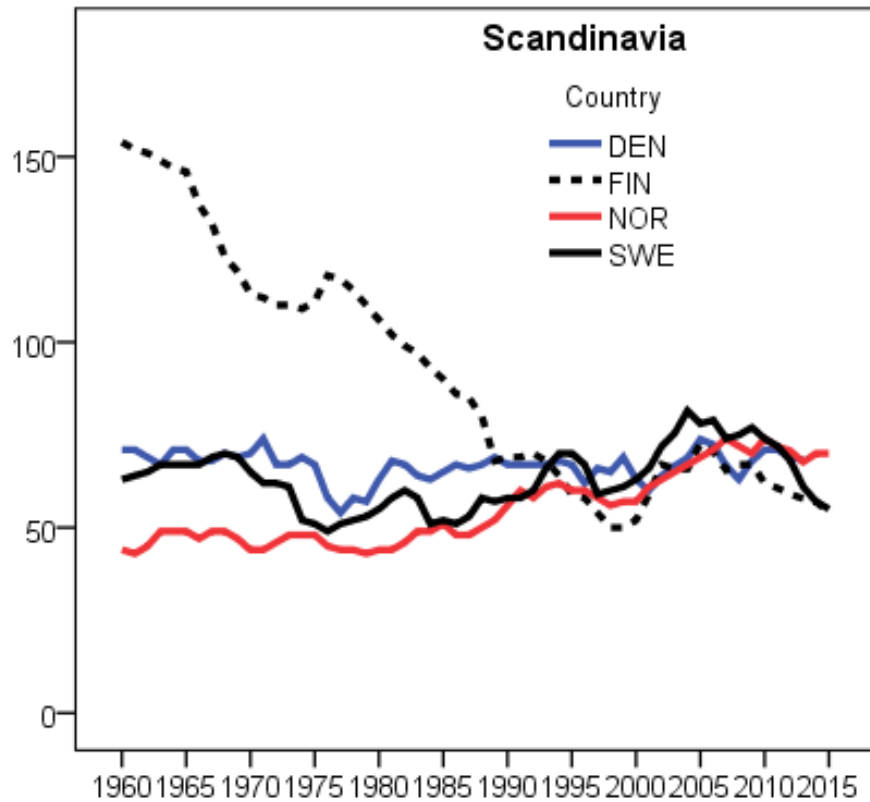


2. In the use of imprisonment the Nordics are the least tough region in the world – and things do not seem to be getting any worse (at least in Finland and Sweden)

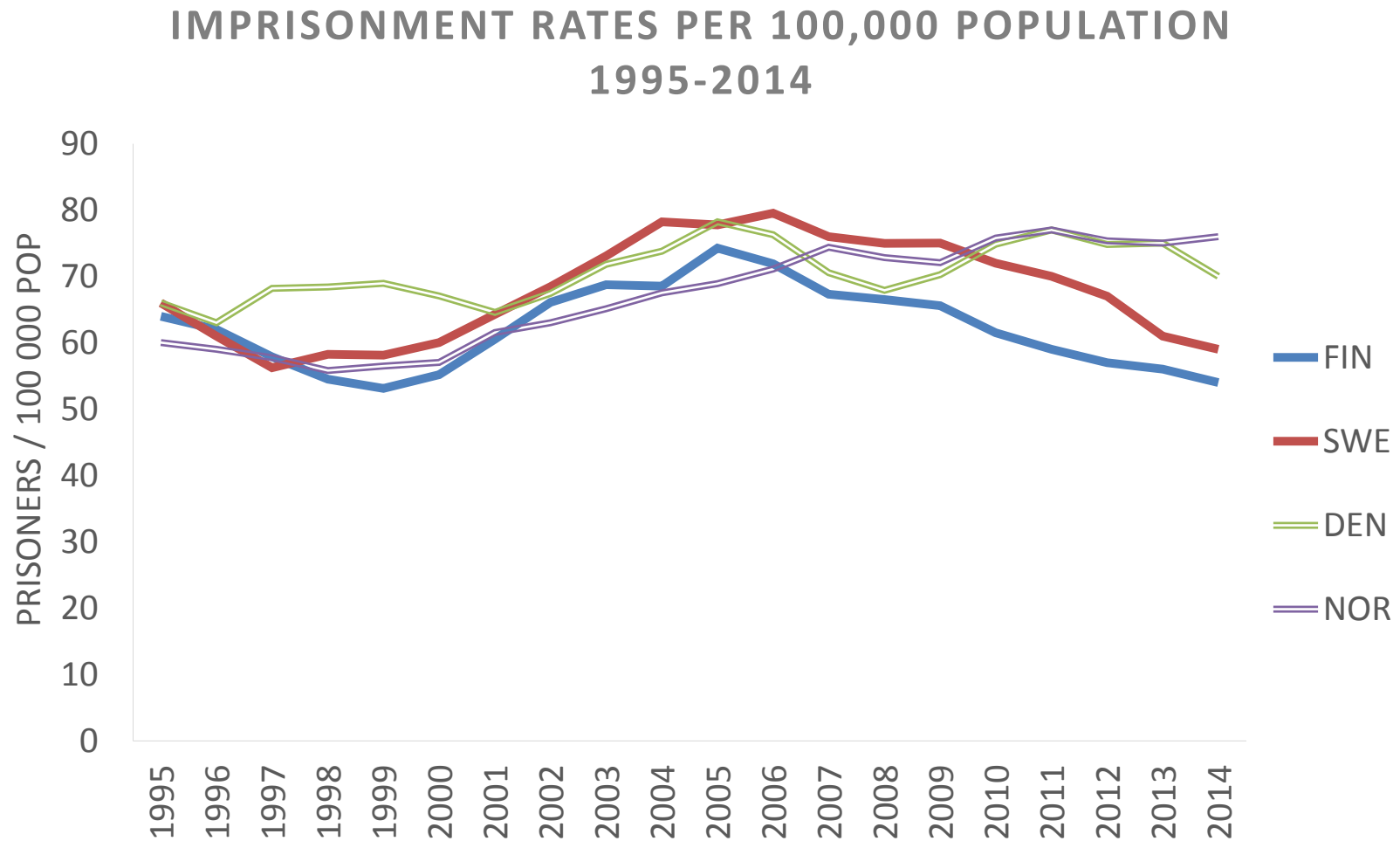
Imprisonment rates in Europe by regions 2014-2016



IMPRISONMENT RATES IN THE NORDIC COUNTRIES AND THE BRITISH ISLES 1960-2015



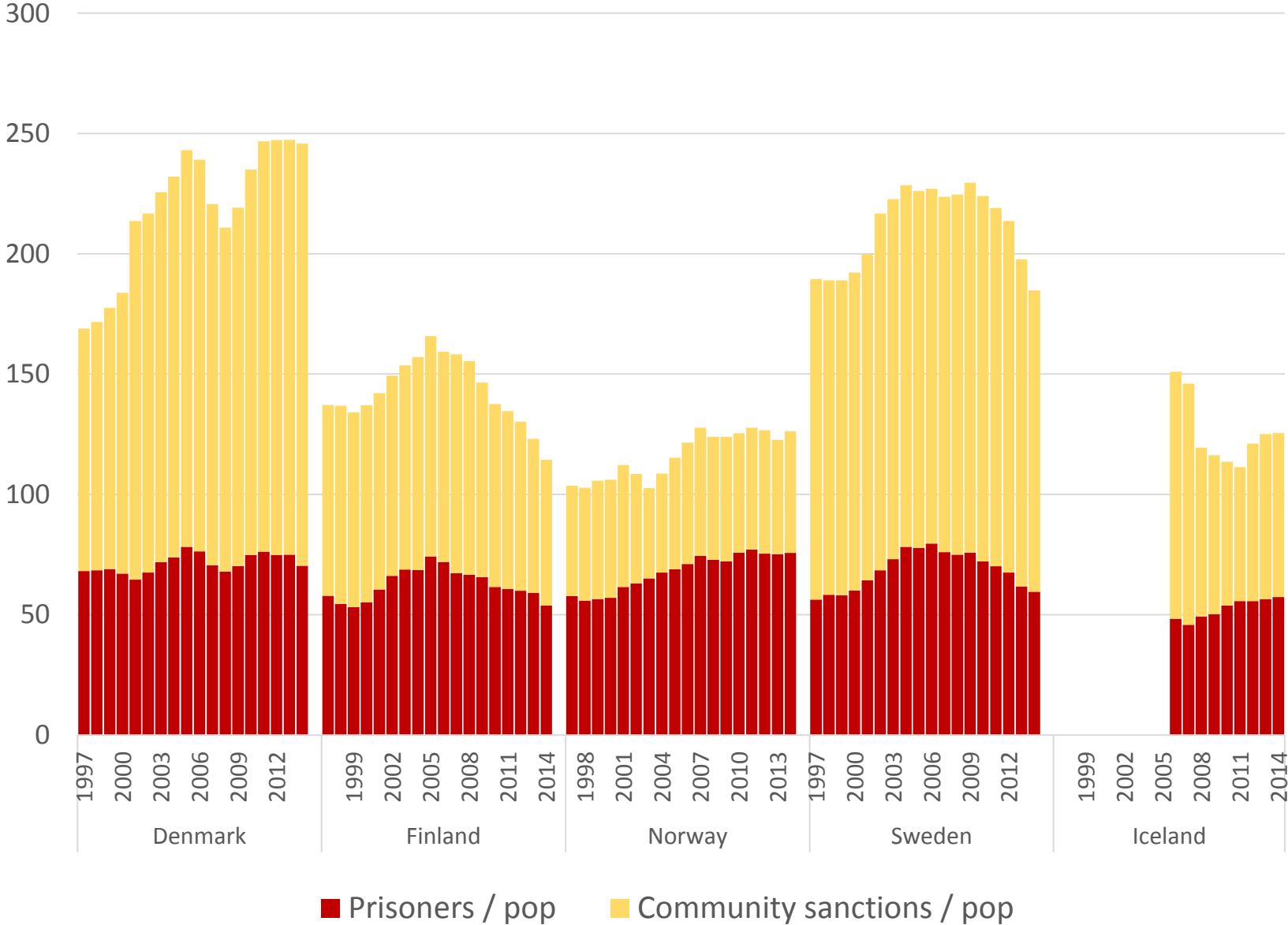
Nordic prisoner-rates 1995-2014



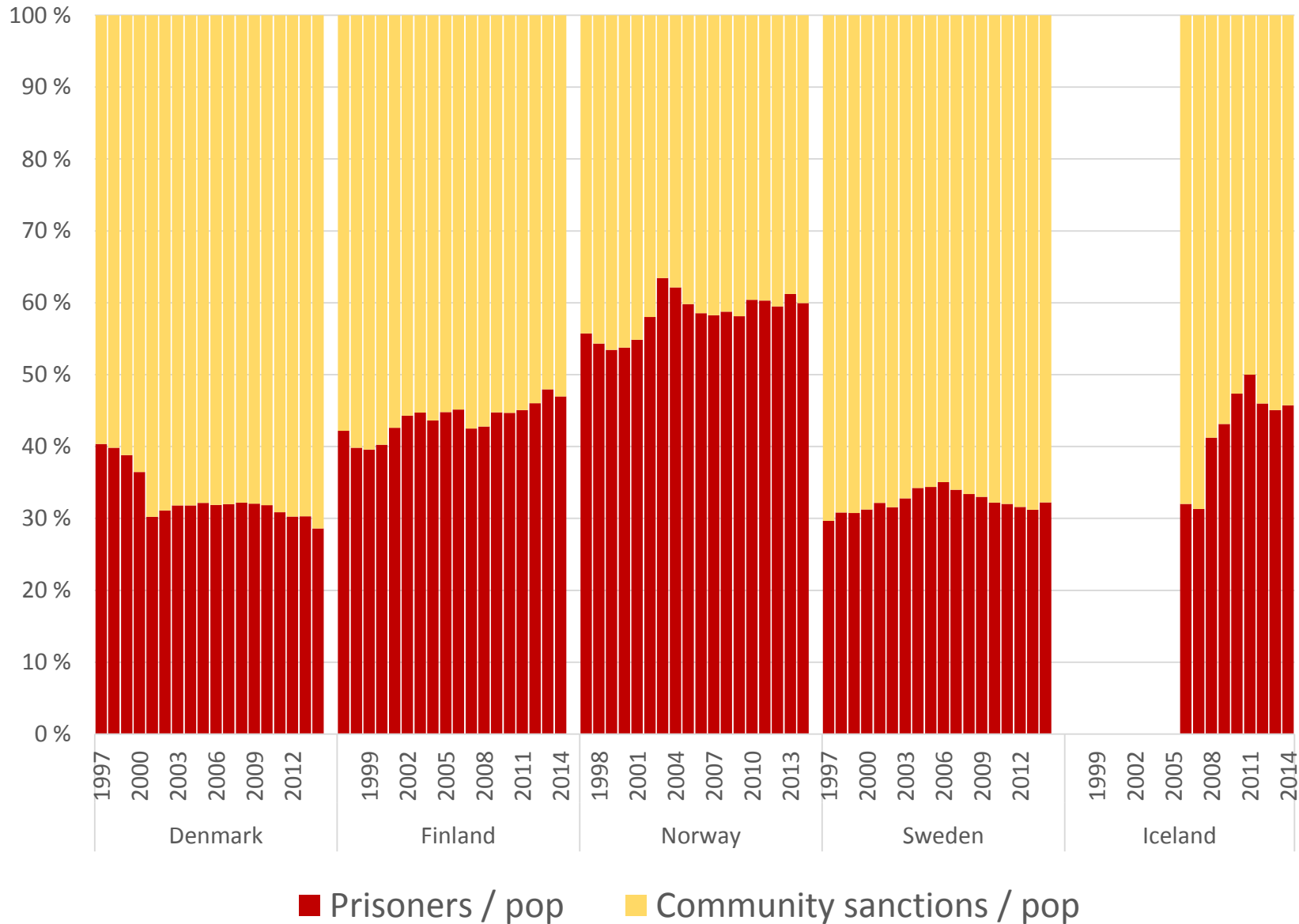
3. When it comes to the use of other sanctions, the countries are in a different position – but nothing indicates any major shift towards harsher regimes

But see Denmark and Norway

Prisoners and offenders in probation 1997-2014 /pop



Prisoners and offenders in probation 1997-2014 (%)



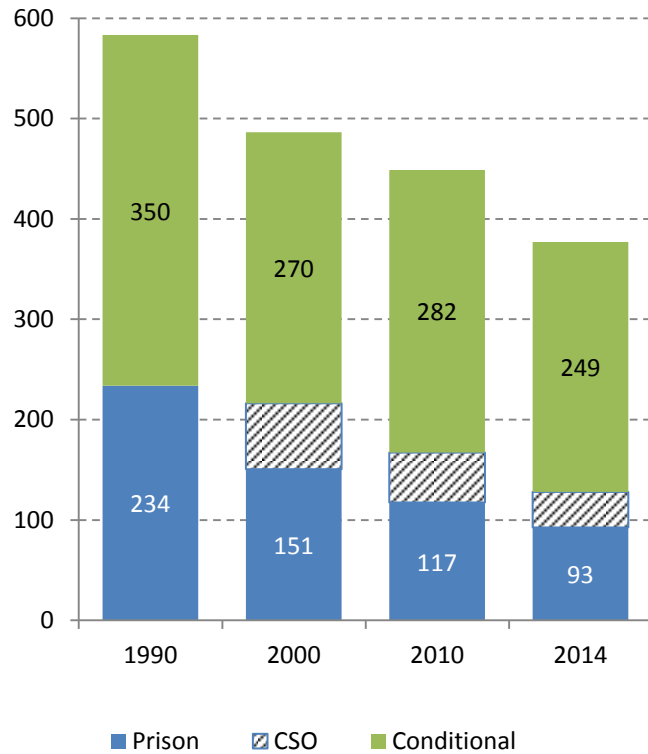
4. How sentencing in the courts has changed

Indicators:

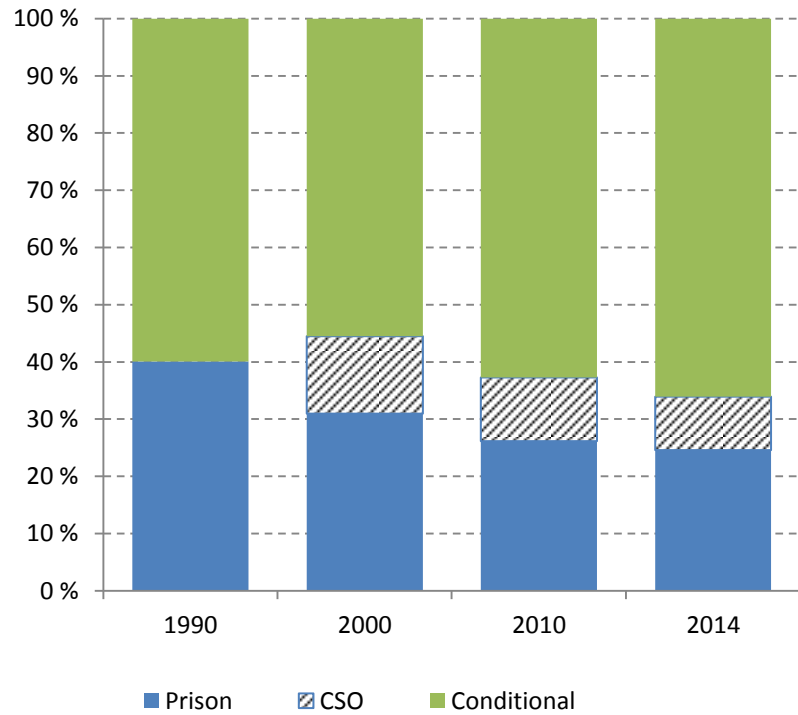
1. The number of imposed community sanctions and prison sentences / pop
2. The distribution (% shares) between community alternatives and imprisonment

Finland 1990-2014

Finland, per 100,000 Population

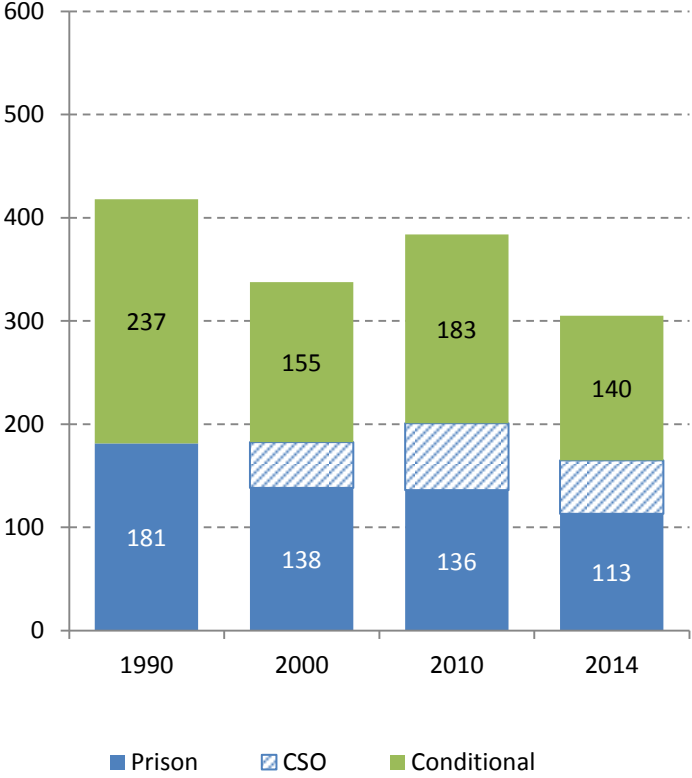


Finland, Percentages

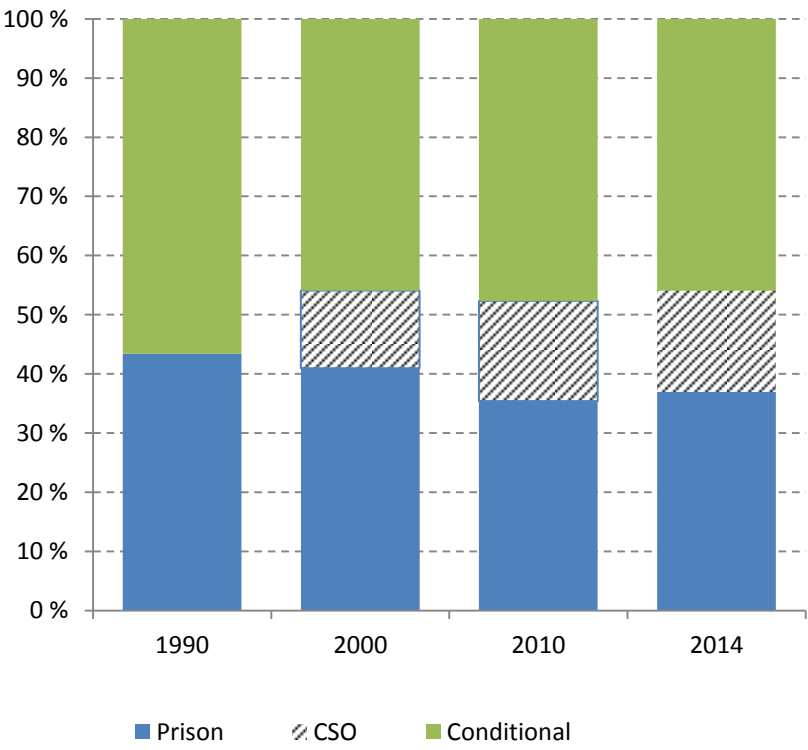


Sweden 1990-2014

Sweden, per 100,000 Population

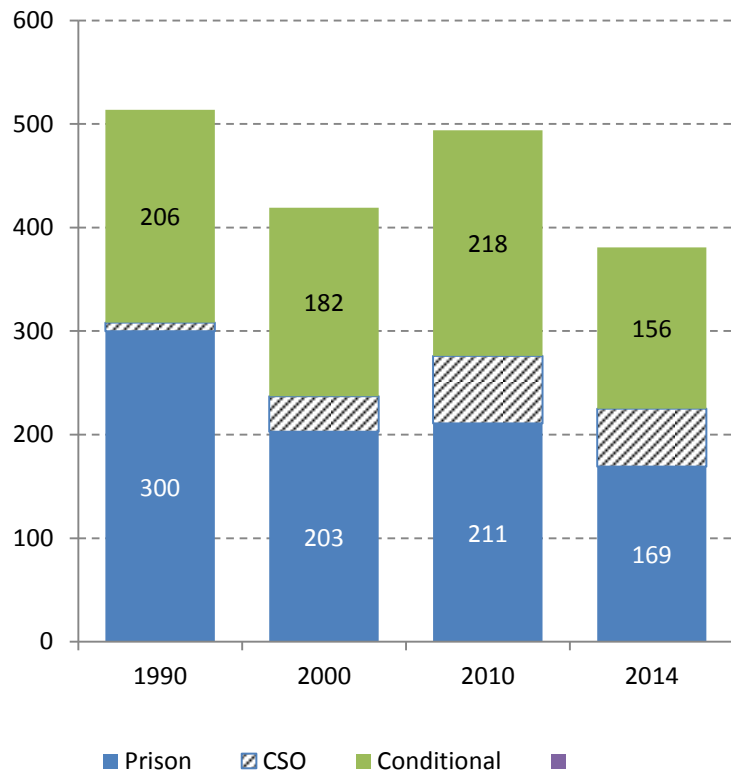


Sweden, Percentages

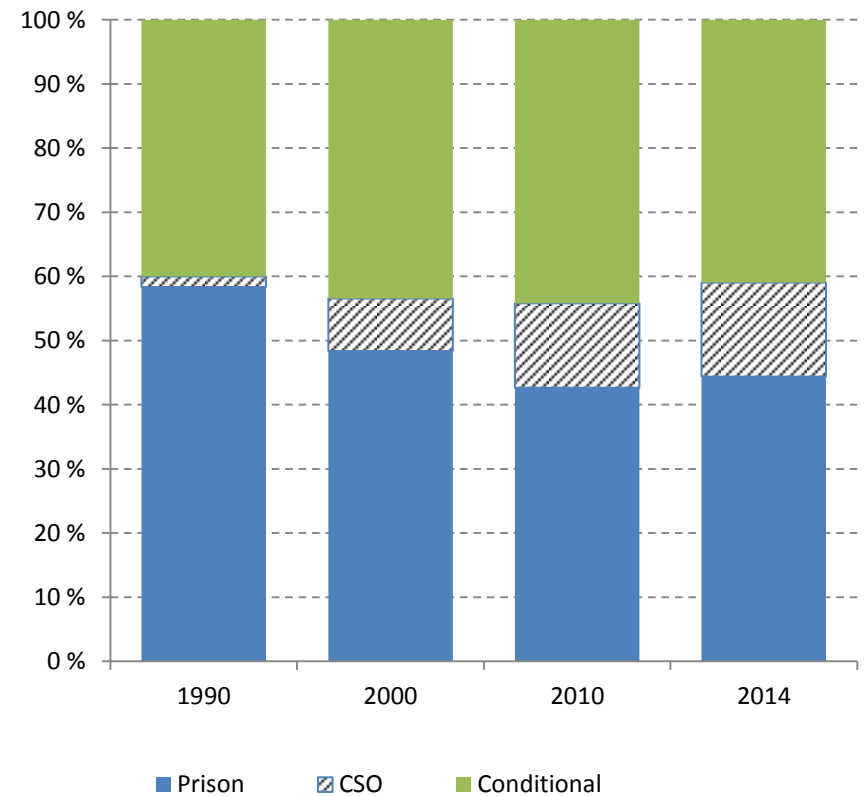


Denmark 1990-2014

Denmark, per 100,000 Population

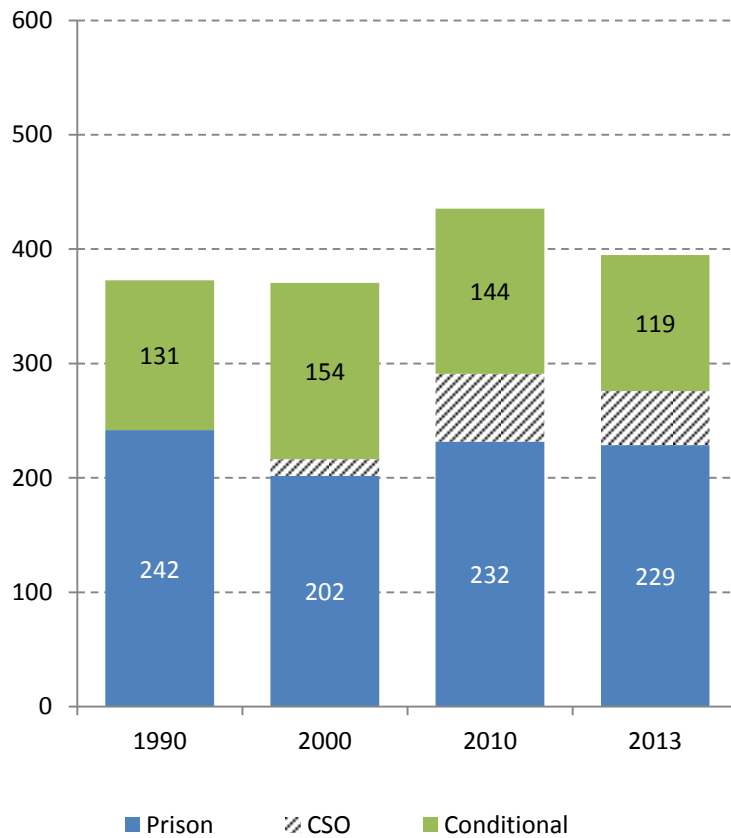


Denmark, Percentages

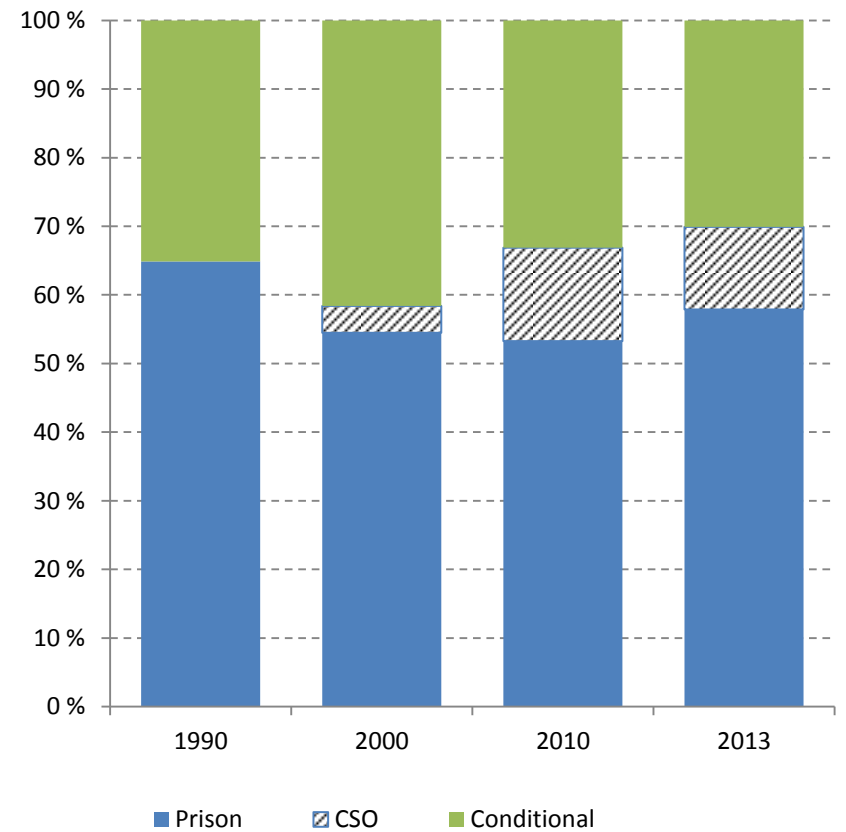


Norway 1990-2014

Norway, per 1000,000 Population

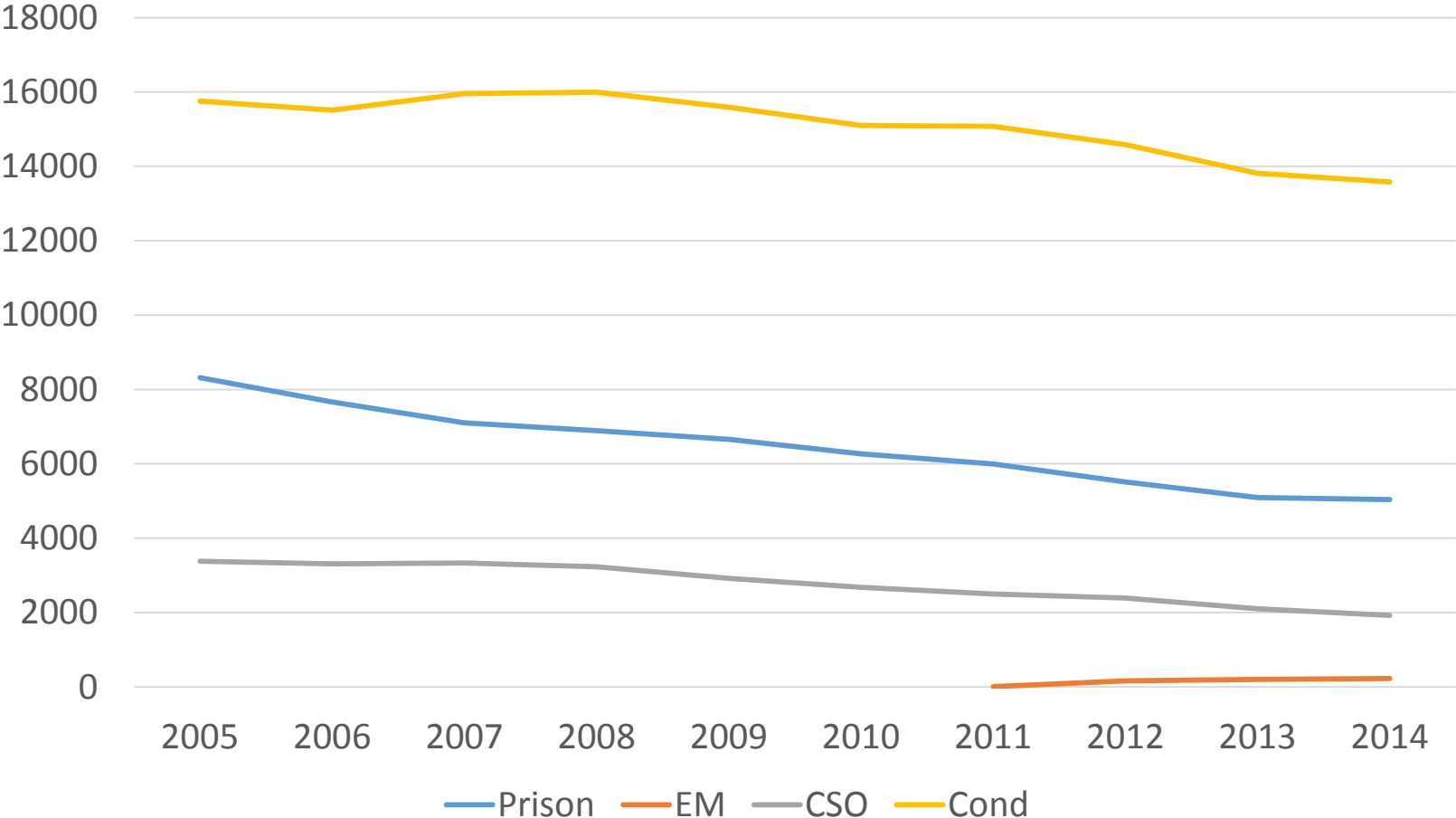


Norway, Percentages



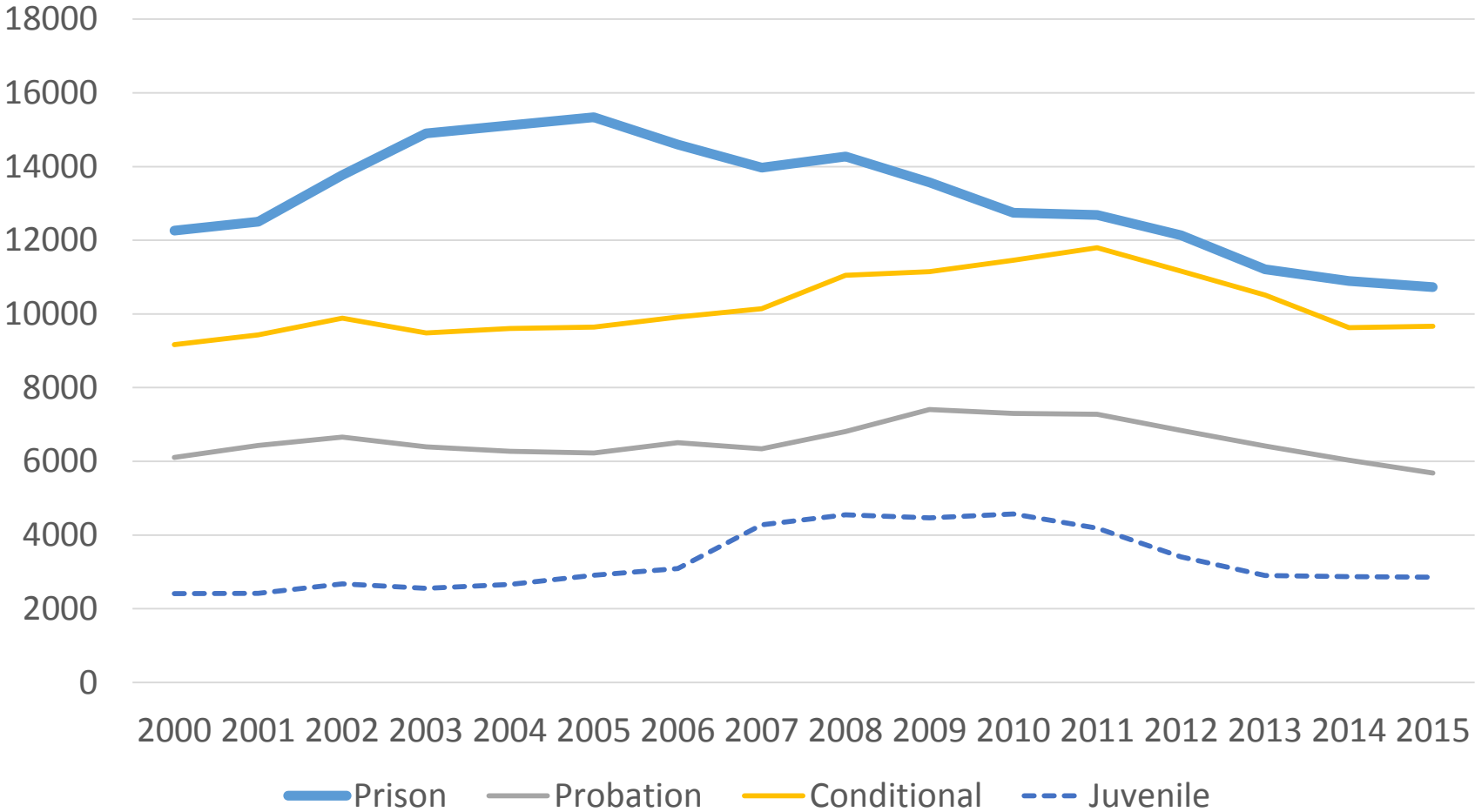
Sentencing in Finland 2005-2014

Court imposed sanctions (other than fines) in Finland 2005-2014



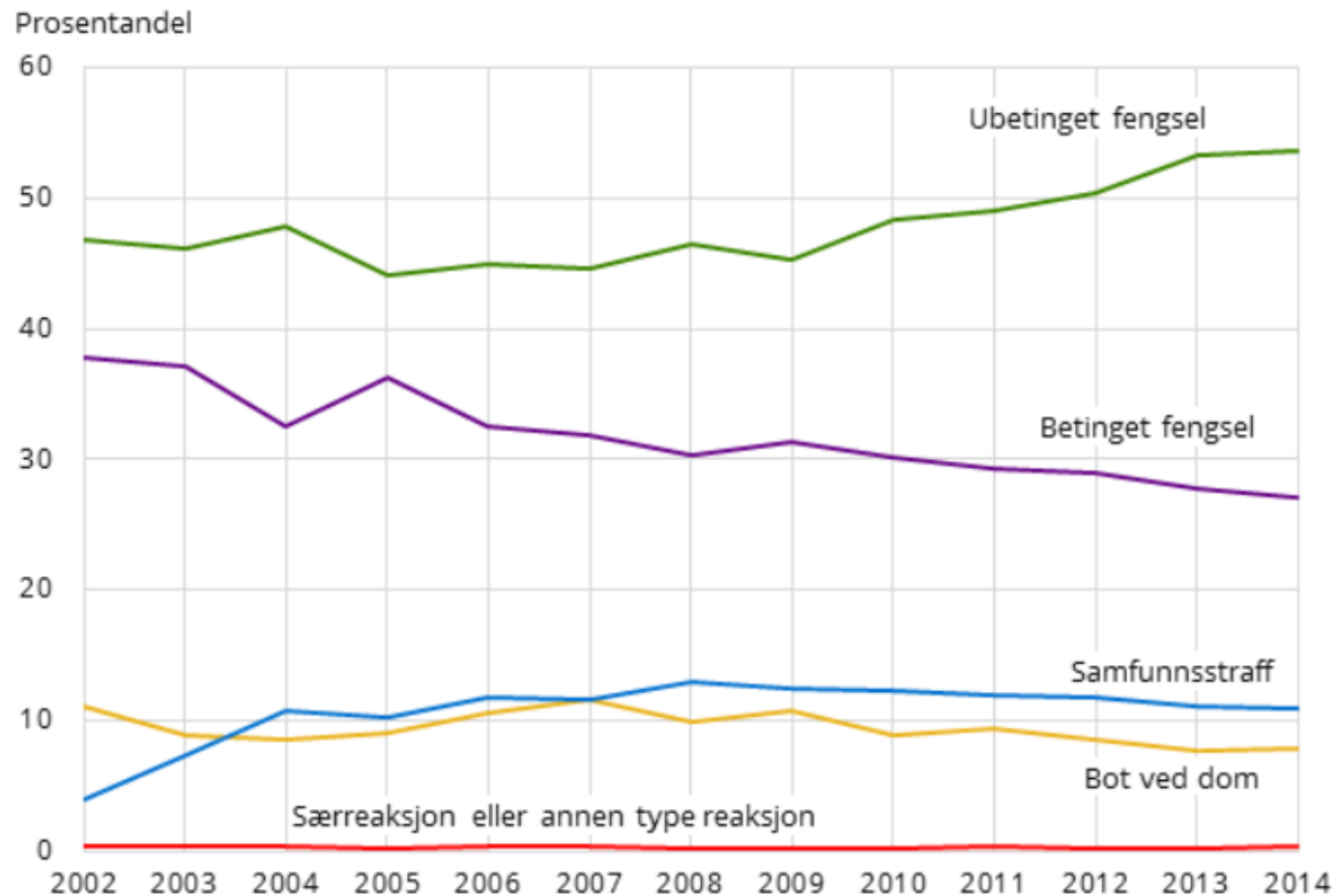
Sentencing in Sweden 2000-2015

Sentencing in Sweden 2000-2015 (excluding fines)



Sentencing in Norway 2002-2014

Figur 3. Straffereaksjoner ilagt av domstolene, etter type reaksjon



-> The total number and relative share of prison sentences has been in decline – however with the exception of Norway

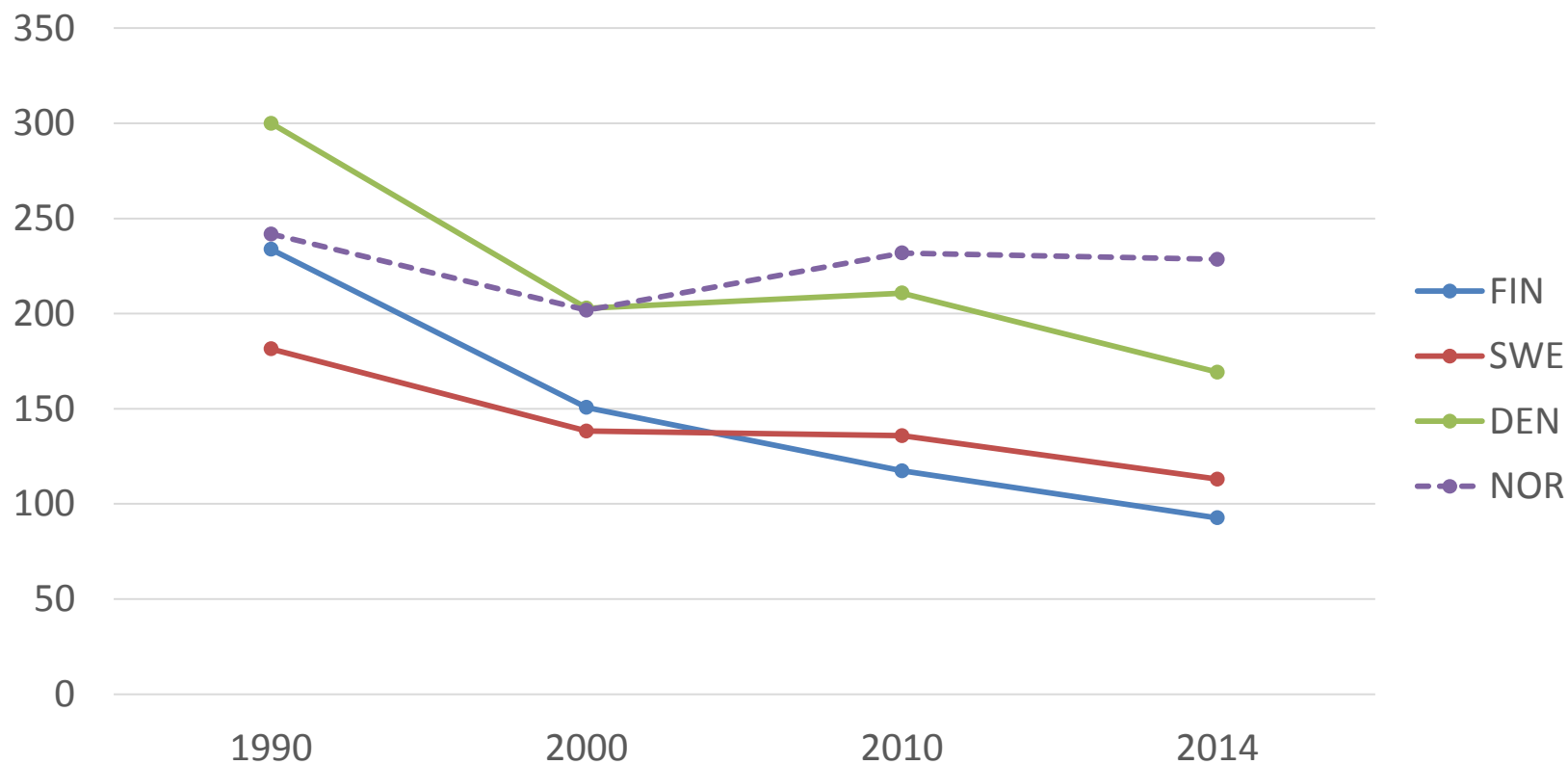
5. The use of imprisonment and the court imposed prison sentences 1990-2014

Indicators:

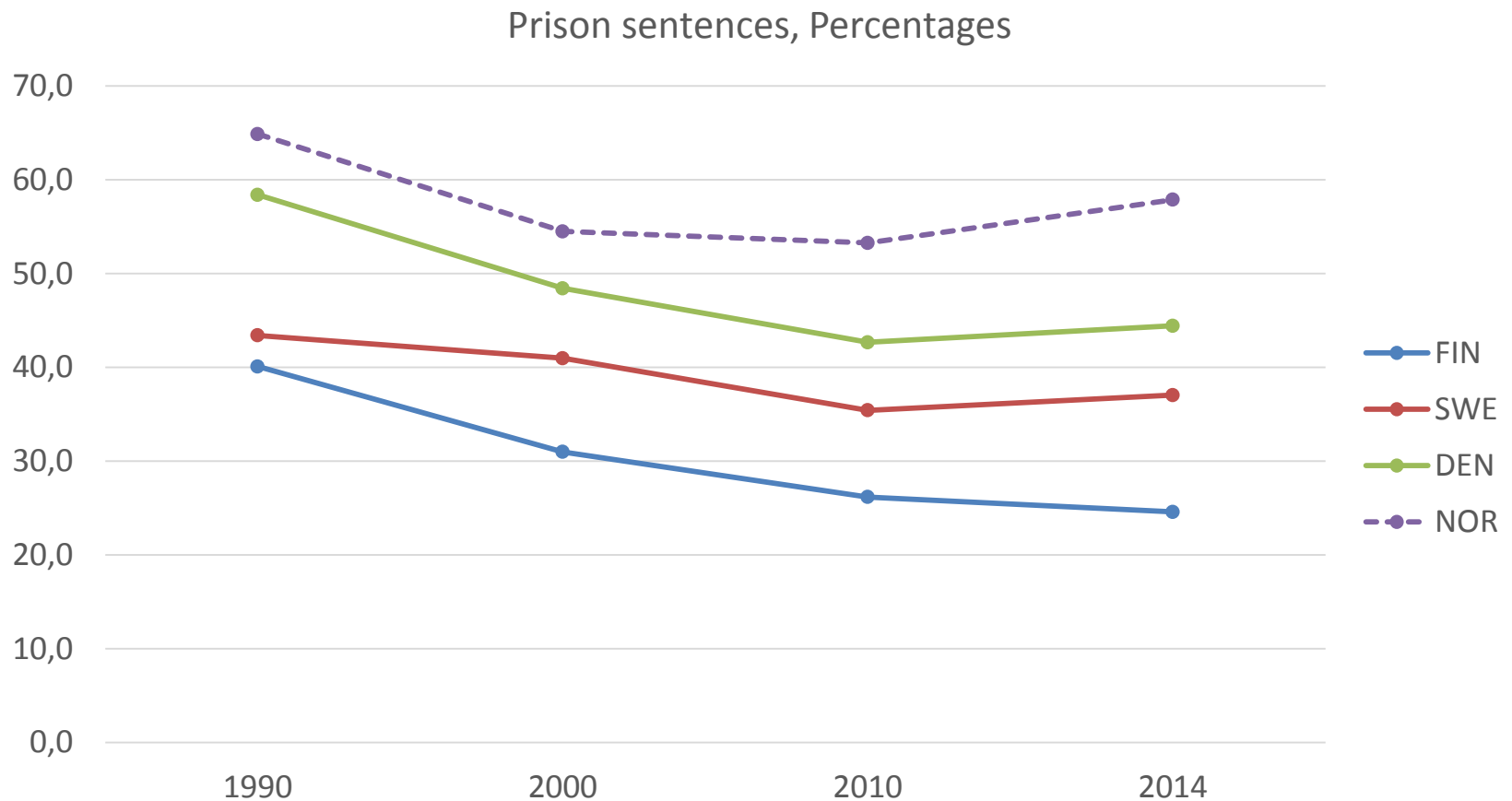
1. The number of imposed prison sentences / pop
2. The share (%) of prison sentences of all (fines excluded)
3. The length of prison term (in months)
4. Total volume of imposed prison years / pop ($N \cdot \text{length}$)

Number of prison sentences/pop

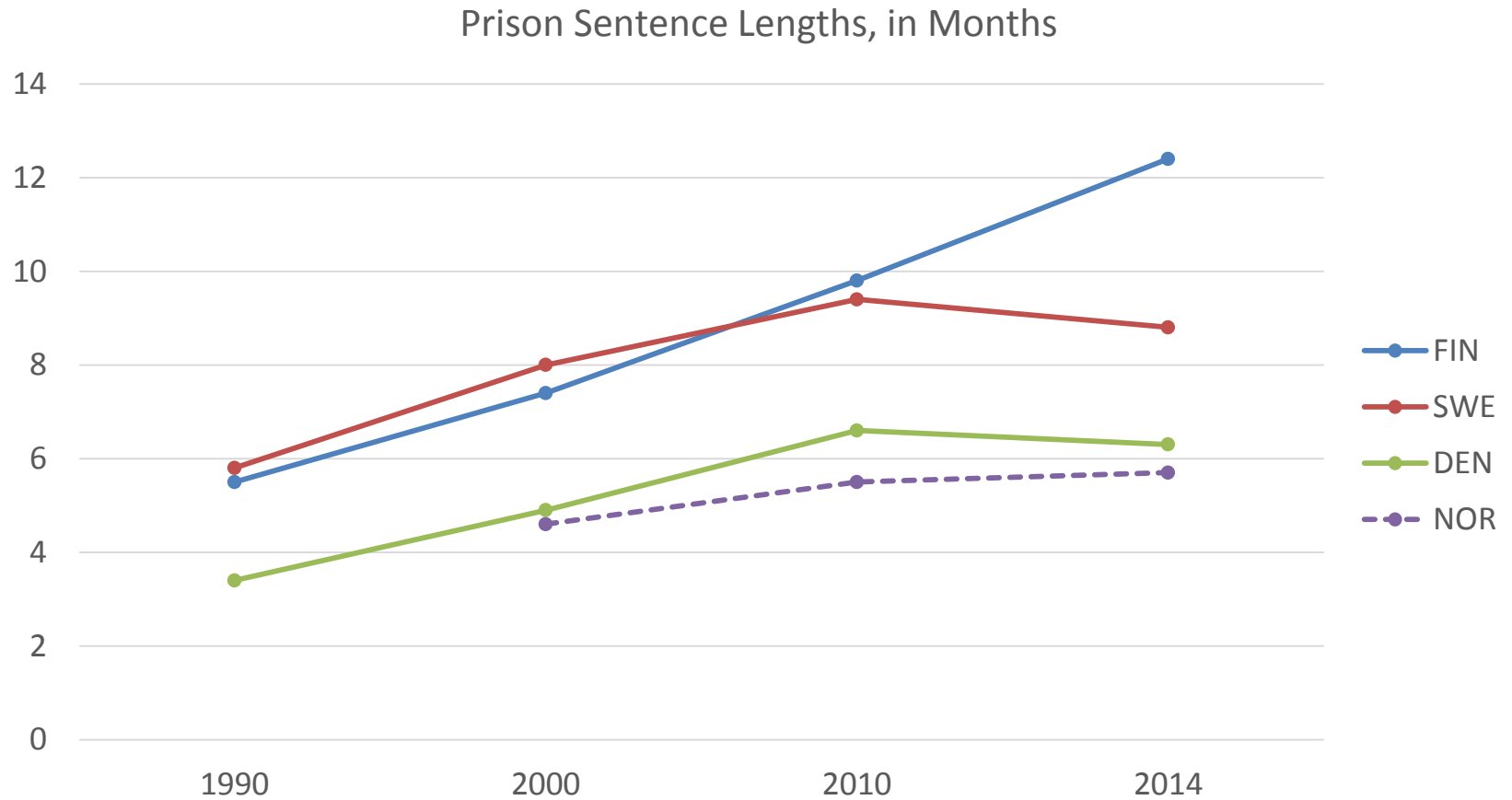
Prison Sentences, per 100,000 Population



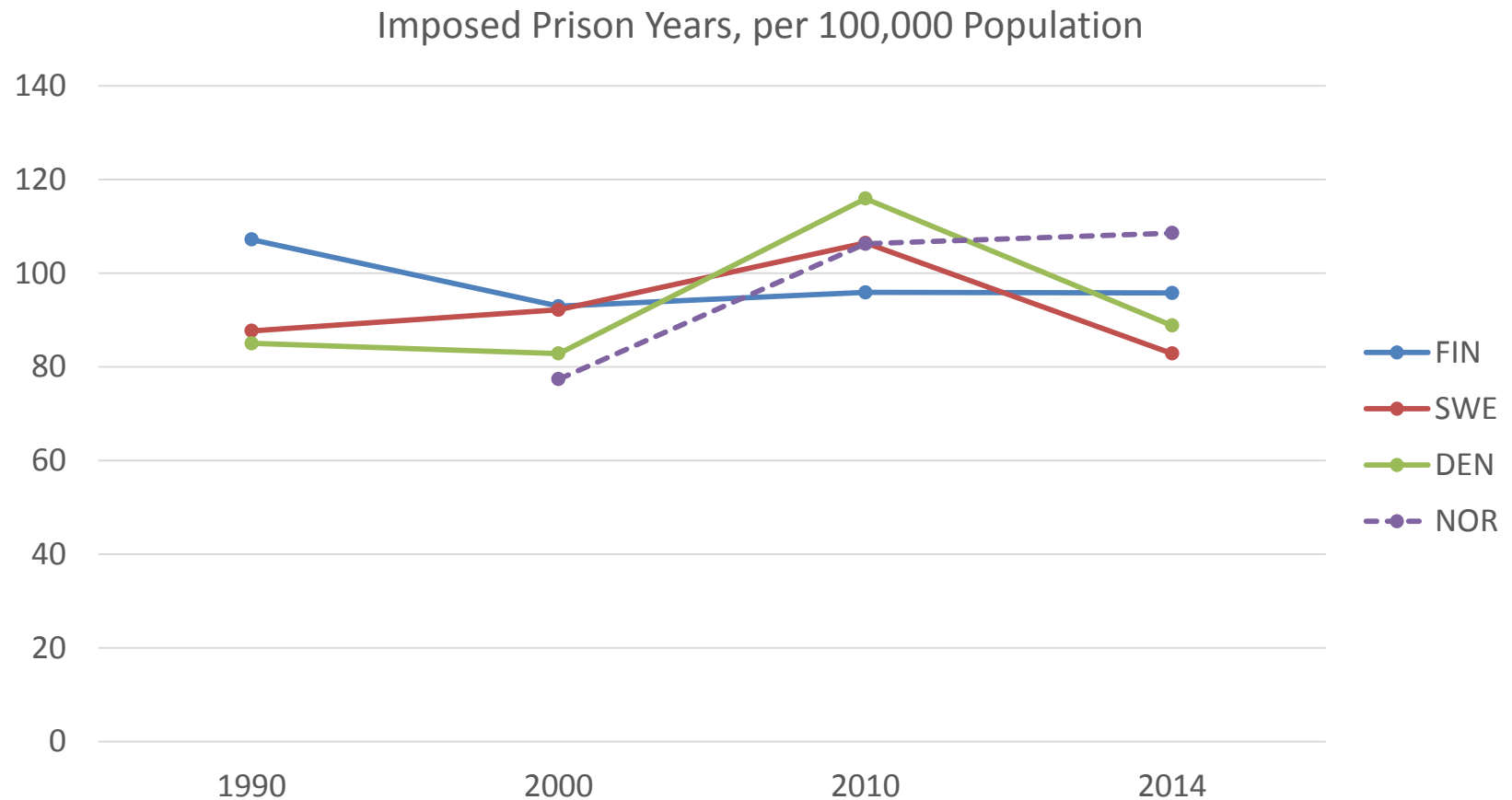
The share of prison sentences (% fines excluded)



Length of prison sentences (mths)



The number of imposed prison years / pop



The use of life imprisonment

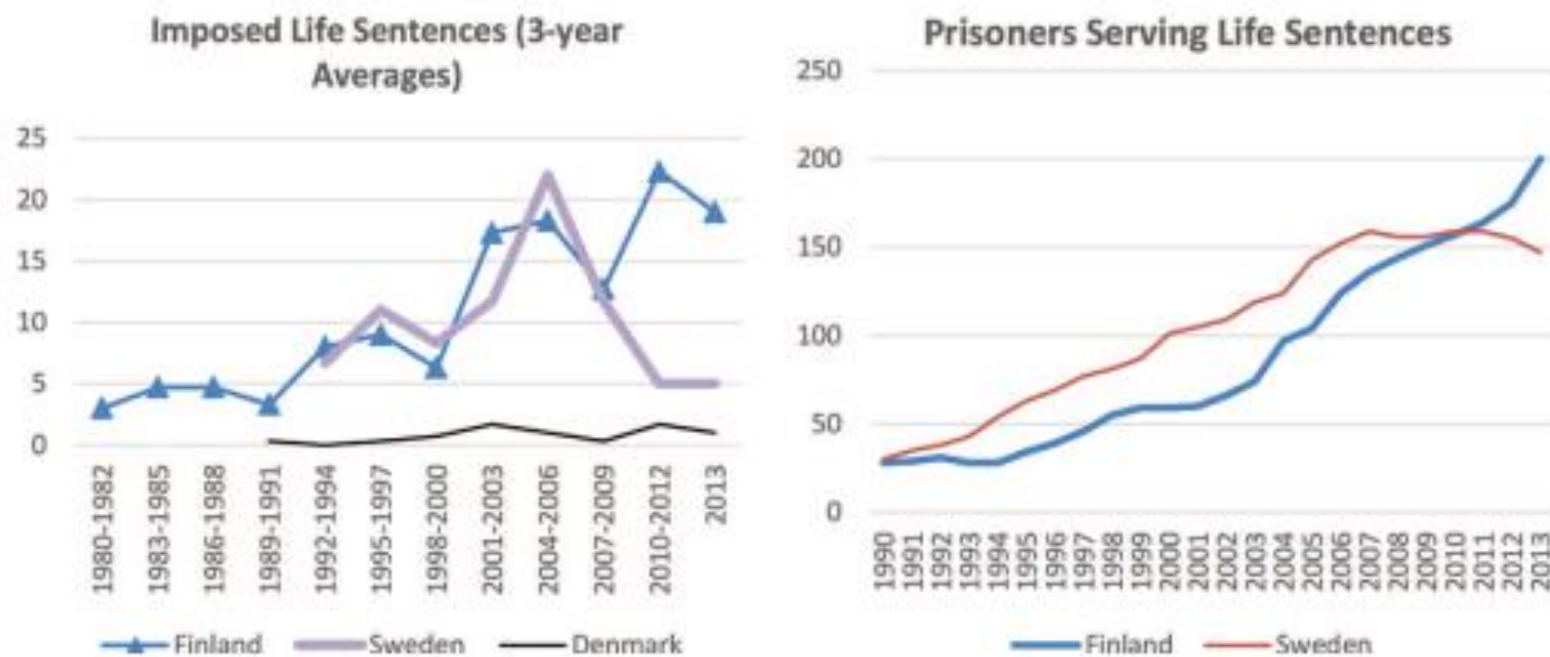


FIG. 8.—Imposed life sentences and absolute numbers of prisoners serving life sentences. Source: Compiled from national statistics.

6. New alternatives

Electronic monitoring

- Threat or an opportunity?

Introducing EM and its forms

- "Back door" (as a form of conditional pre-release)
 - Sweden 2001: max 3 months (2007 6 months) pre-release
 - Denmark 2005: max 6 months pre-release
 - Finland 2006: max 6 months pre-release
 - Norway 2008: max 4 months pre-release
 - Iceland 2011: 1-8 months pre-release depending on the length of sentence
- "Front door" (by court order or prison administration)
 - Sweden 1999: sentence conversion max 3 mths (2005 6 months) by prison administration
 - Denmark 2005: sentence conversion max 3 mths by prison administration (2010 up to 5months, 2013 up to 6 months)
 - Norway 2008: sentence conversion max 4 mths by prison administration
 - Finland 2011: as a part of max 6 months supervision order by court

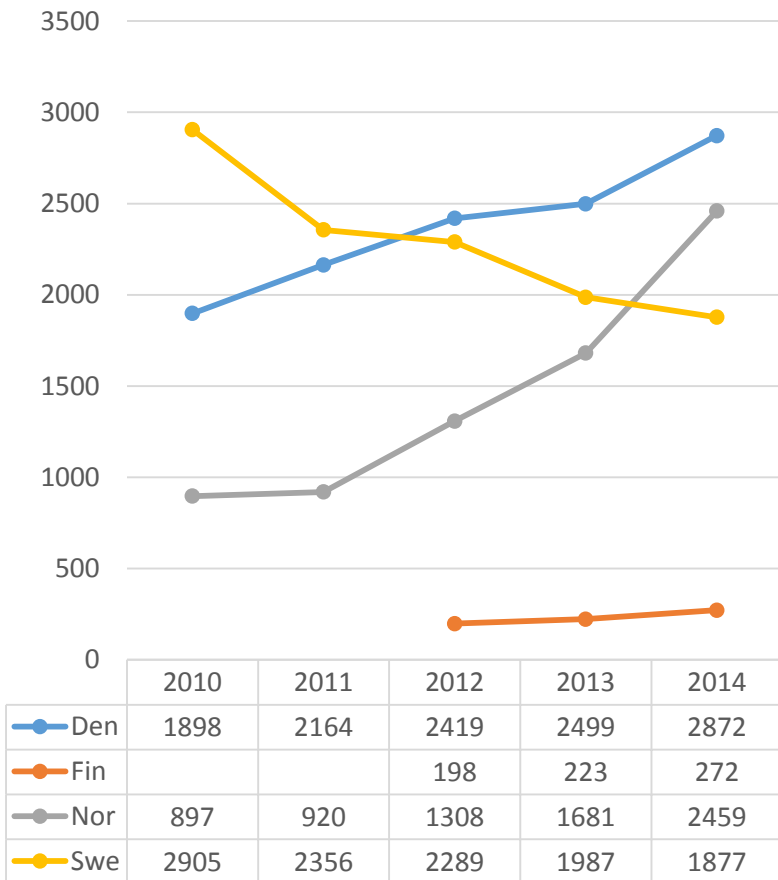
ELECTRONIC MONITORING 2014 (absolute)

Stock and flow. (Source: Kristofferssen 2016)

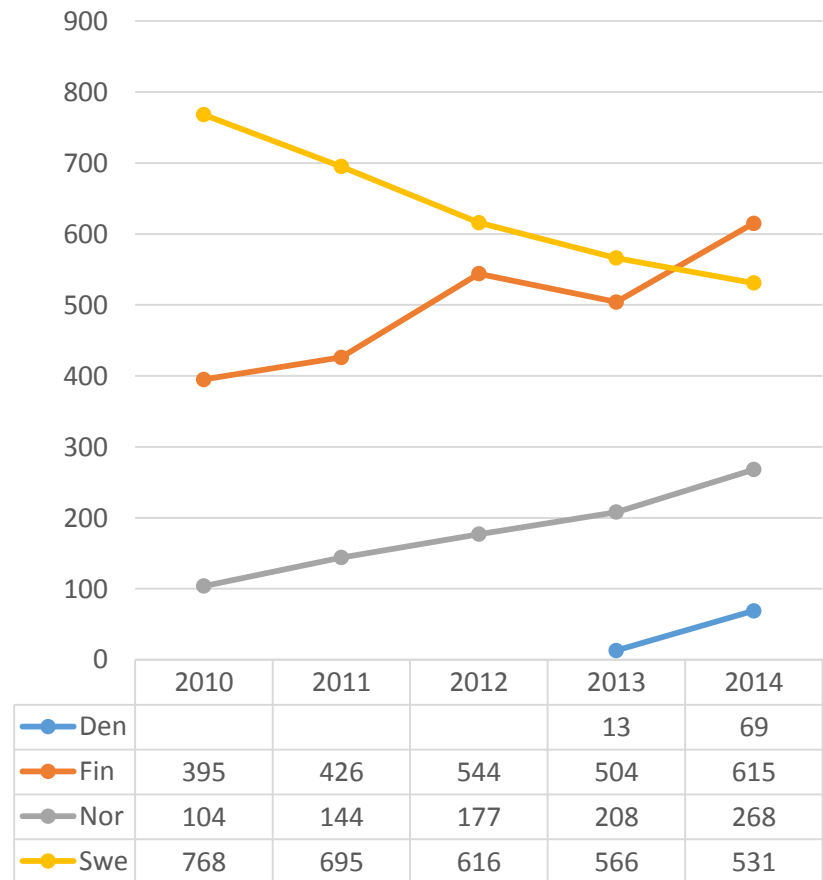
	Finland	Sweden	Denmark	Norway	Iceland
EM Front door					
- Flow	272	1877	2872	2459	..
- Stock	45	241	352	209	..
EM Back door					
- Flow	615	531	69	268	45
- Stock	168	125	14	41	8

Front door and back door EM 2010-2014. New entries (flow)

EM 2010.-2014. Front door.
New entries / abs (flow)

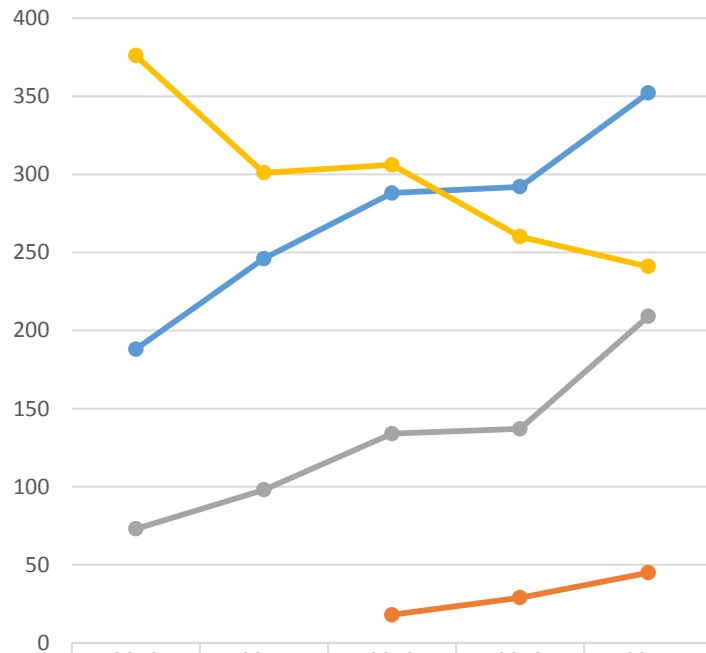


EM 2010.-2014. Back door.
New entries / abs (flow)



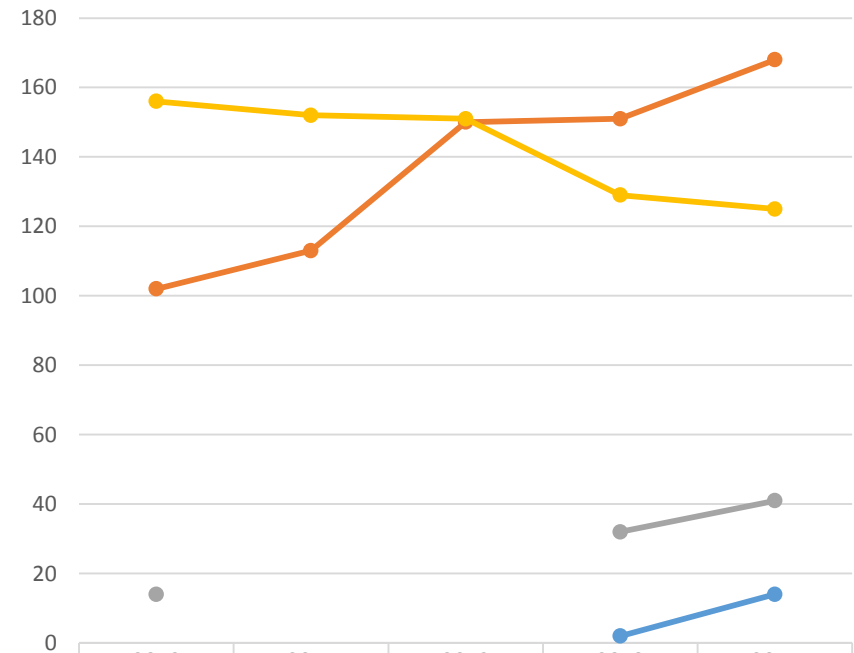
Front door and back door EM 2010-2014. Daily averages (stock)

EM 2010.-2014. Front door.
Daily average / abs (stock)



	2010	2011	2012	2013	2014
Den	188	246	288	292	352
Fin			18	29	45
Nor	73	98	134	137	209
Swe	376	301	306	260	241

EM 2010.-2014. Back door.
Daily average / abs (stock)



	2010	2011	2012	2013	2014
Den				2	14
Fin	102	113	150	151	168
Nor	14			32	41
Swe	156	152	151	129	125

7. Differences in sentencing-practice between the Nordics ?

Indicators

Percentual shears

Relative to population

Prison terms (months)

Imposed prison years (brutto)

prison years / population

prison /years offences (recorded, by surveys?)

Sanction Patterns, Nordic Countries, Rates per 100,000 population and Percentages, 2013-14

	<i>Finland</i>	<i>Sweden</i>	<i>Denmark</i>	<i>Norway</i>
COURT DISPOSITIONS	Rate (%)	Rate (%)	Rate (%)	Rate (%)
Prison	93 (9 %)	113 (19 %)	169 (15 %)	229 (53 %)
Community service	35 (4 %)	52 (9 %)	56 (5 %)	48 (11 %)
Conditional/probation order	249 (25 %)	140 (23 %)	156 (13 %)	119 (28 %)
Fines in court	616 (62 %)	303 (50 %)	779 (67 %)	33 (8 %)
ALL	994 (100 %)	608 (100 %)	1160 (100%)	428 (100 %)

Sanction Patterns, Nordic Countries, Rates per 100,000 population and Percentages, 2013-14

	<i>FIN</i>	<i>SWE</i>	<i>DEN</i>	<i>NOR</i>
IMPOSED PRISON TERM (months)	12.4	8.8	6.3	5.7
IMPOSED PRISON YEARS (2014)	5219	7989	4997	5546
Per 100,000 population	96	83	89	109
PRISON STATISTICS				
Prison term (months)	10.3	8.1	6.5	6.1
Admissions per 100,000	63	93	117	147
Prisoners per 100,000	54	63	75	75

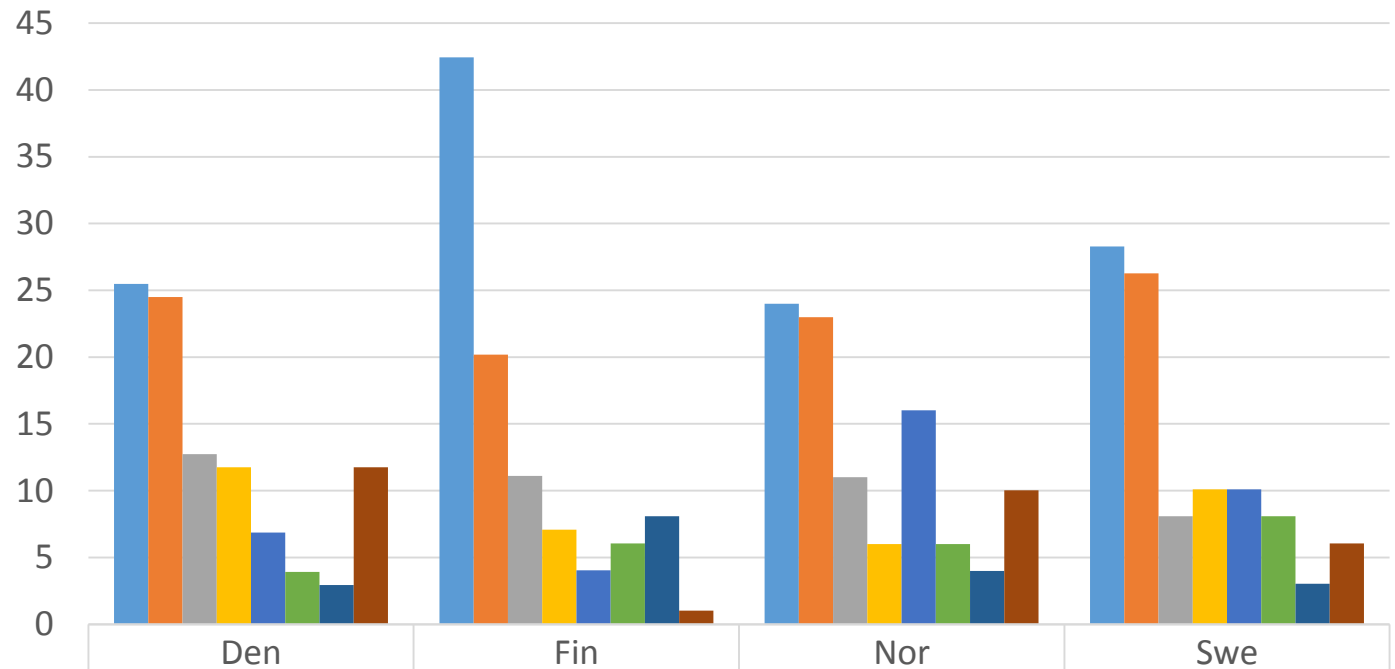
		A	B	C	D	E	F
		Convicted per 100,000	Prison per 100,000	Mean Prison in Months	Prison Percentage	Prison percentage, No Fines	Prison Years per 100,000
ASSAULT							
	Denmark	73	33	5.6	45.1	52.8	15.3
	Finland	187	16	11.6	8.8	25.0	15.9
	Sweden	77	17	8.5	21.8	25.9	11.3
RAPE							
	Denmark	1	0.8	25.2	78.9	93.8	1.7
	Finland	3.1	1.1	32.1	42.9	42.9	3.6
	Sweden	1.9	1.6	26.6	88	88.0	3.5
THEFT							
	Denmark	316	38	4.9	12.1	59.0	15.4
	Finland	115	15	7.5	12.9	42.8	9.3
	Sweden	185	24	4.6	12.8	33.8	8.6
ROBBERY							
	Denmark	13	10	19.5	76.9	85.7	15.8
	Finland	8	4	19.2	53.4	53.6	7.0
	Sweden	9	6	19.9	65.3	65.4	7.0
DRUNK DRIVING							
	Denmark	164	16	1.7	9.7	33.6	2.3
	Finland	299	22	3.4	7.2	12.4	6.1
	Sweden	67	22	1.5	32	49.3	2.3
DRUGS							
	Denmark	270	27	14.9	10	66.8	33.5
	Finland	73	11	22.3	14.9	40.6	20.3
	Sweden	177	16	14.6	9	48.4	17.7

8. Prison profiles by offense type

Prisoner profiles by offense-type 2014 (sentenced prisoners)

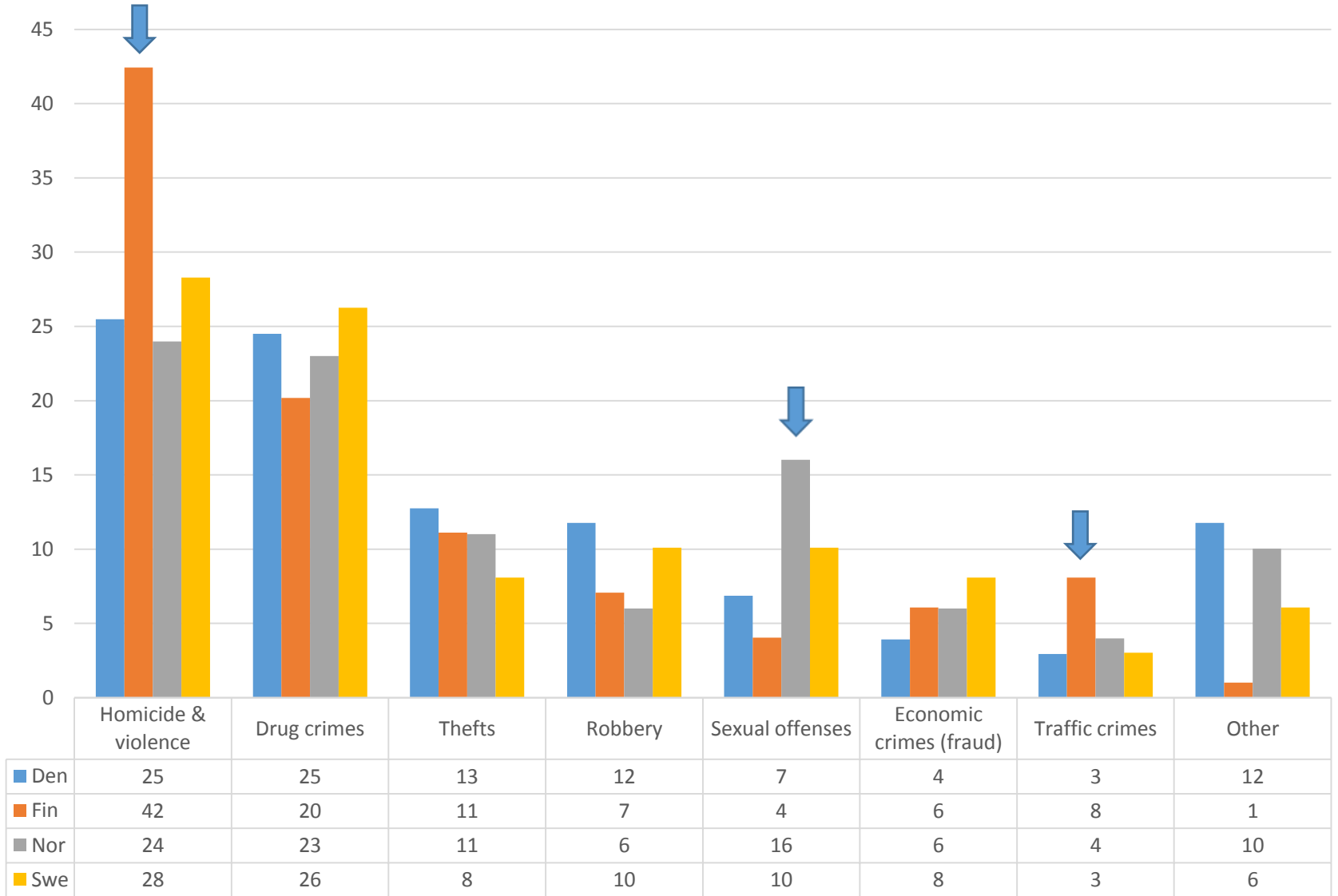
Offense type. Prisoners serving a sentence	England & Wales			Denmark			Finland			Norway			Sweden		
	N	%	/pop	N	%	/pop	N	%	/pop	N	%	/pop	N	%	/pop
Homicide & violence	18990	25,6	33,8	570	25,5	10,2	957	42,4	17,8	632	24,0	12,8	1121	28,3	11,9
Drug crimes	11008	14,8	19,6	548	24,5	9,9	455	20,2	8,5	606	23,0	12,3	1041	26,3	11,1
Thefts	12056	16,2	21,5	285	12,7	5,1	251	11,1	4,7	290	11,0	5,9	320	8,1	3,4
Robbery	7822	10,5	13,9	263	11,8	4,7	160	7,1	3,0	158	6,0	3,2	400	10,1	4,3
Sex crimes	12531	16,9	22,3	153	6,9	2,8	91	4,0	1,7	422	16,0	8,6	400	10,1	4,3
Economic crimes (fraud)	1373	1,9	2,4	88	3,9	1,6	137	6,1	2,5	158	6,0	3,2	320	8,1	3,4
Traffic crimes	405	0,5	0,7	66	2,9	1,2	182	8,1	3,4	105	4,0	2,1	120	3,0	1,3
Other	10029	13,5	17,9	263	11,8	4,7	23	1,0	0,4	264	10,0	5,4	240	6,1	2,6
All	74214	100,0	132,1	2236	100,0	40,2	2256	100,0	42,0	2635	100,0	53,6	3963	100,0	42,1
Population 2011 (1000s)	56171			5561			5375			4920			9416		

Prisoners serving a sentence for different offenses 2014 (% shares)

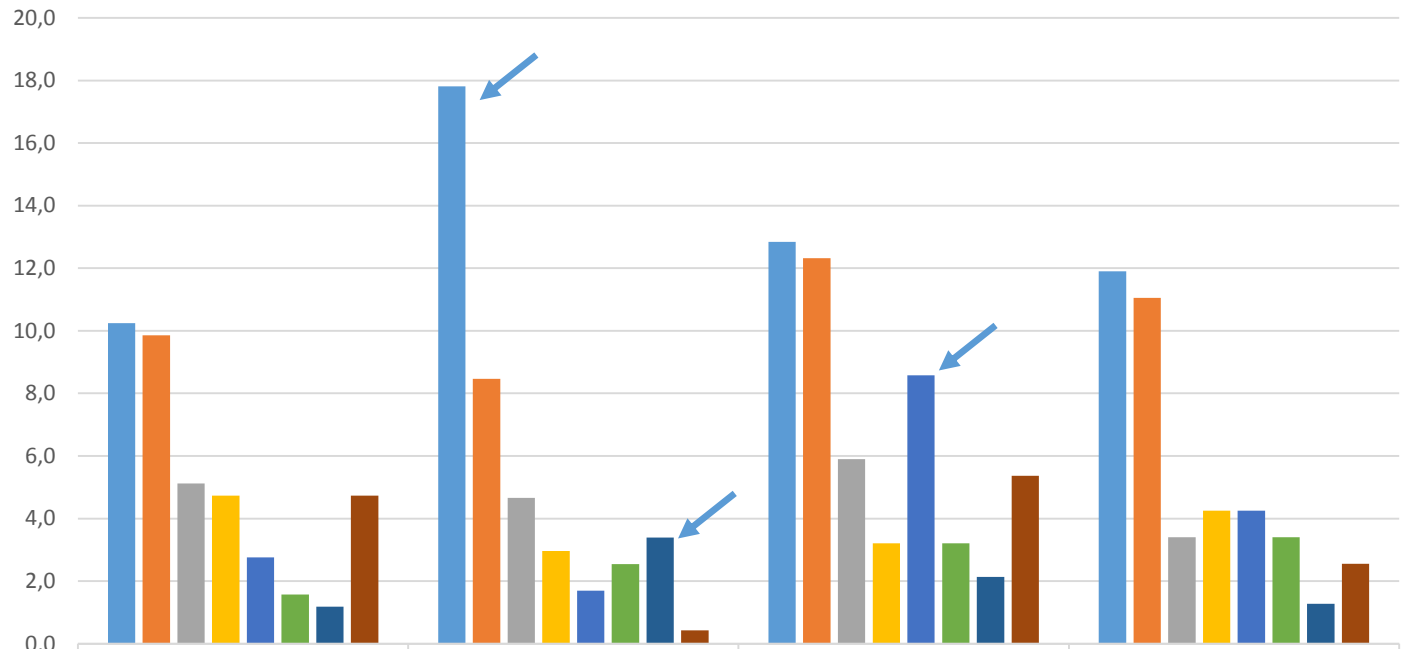


	Den	Fin	Nor	Swe
Homicide & violence	25	42	24	28
Drug crimes	25	20	23	26
Thefts	13	11	11	8
Robbery	12	7	6	10
Sexual offenses	7	4	16	10
Economic crimes (fraud)	4	6	6	8
Traffic crimes	3	8	4	3
Other	12	1	10	6

Prisoners serving a sentence for different offenses 2014 (% shares)



Prisoners serving a sentence for different offenses 2014 (/100 000 pop)

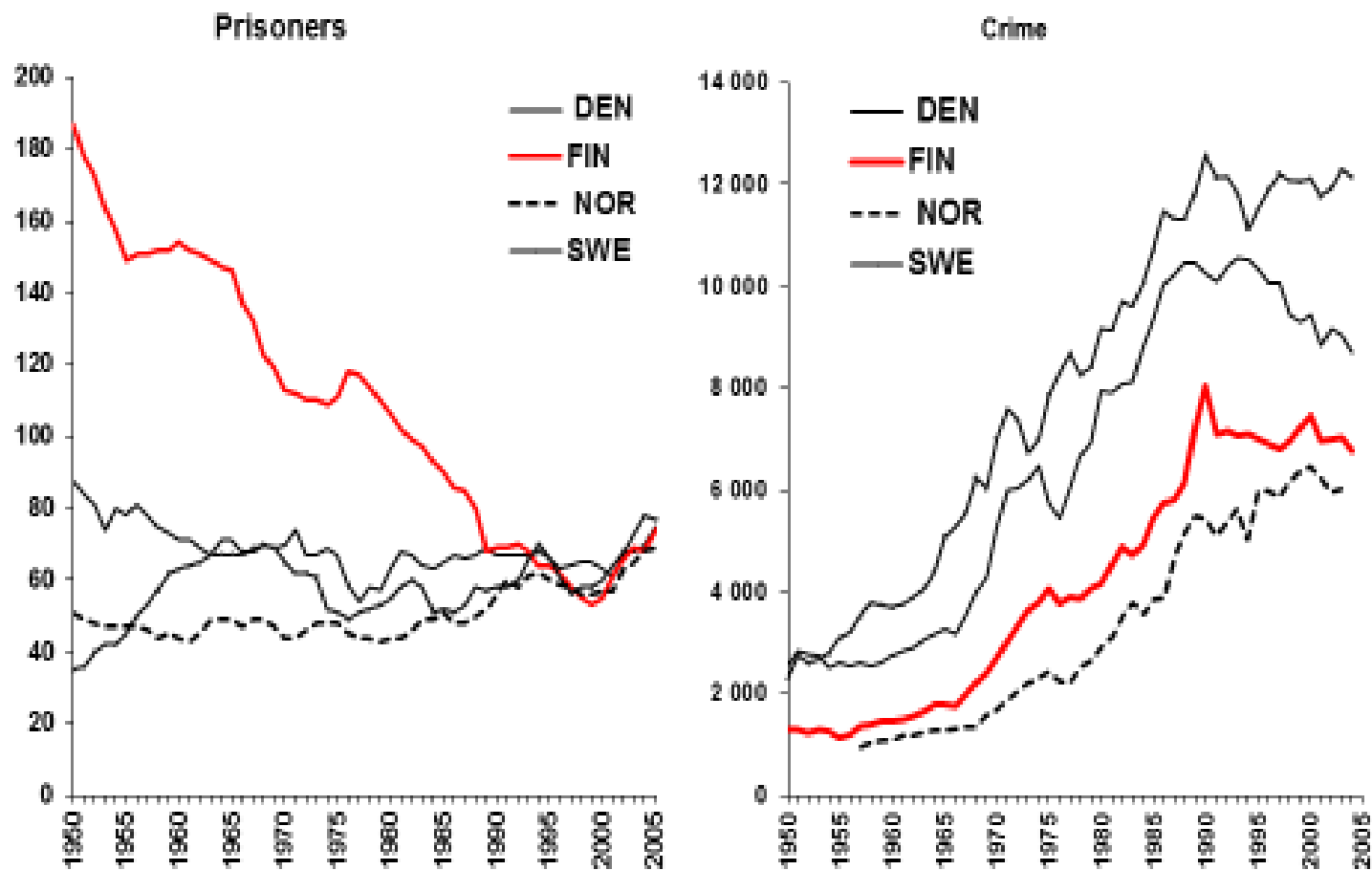


	Den	Fin	Nor	Swe
■ Homicide & violence	10,2	17,8	12,8	11,9
■ Drug crimes	9,9	8,5	12,3	11,1
■ Thefts	5,1	4,7	5,9	3,4
■ Robbery	4,7	3,0	3,2	4,3
■ Sexual offenses	2,8	1,7	8,6	4,3
■ Economic crimes (fraud)	1,6	2,5	3,2	3,4
■ Traffic crimes	1,2	3,4	2,1	1,3
■ Other	4,7	0,4	5,4	2,6

9. Crime and Incarceration

PRISON RATES AND CRIME RATES

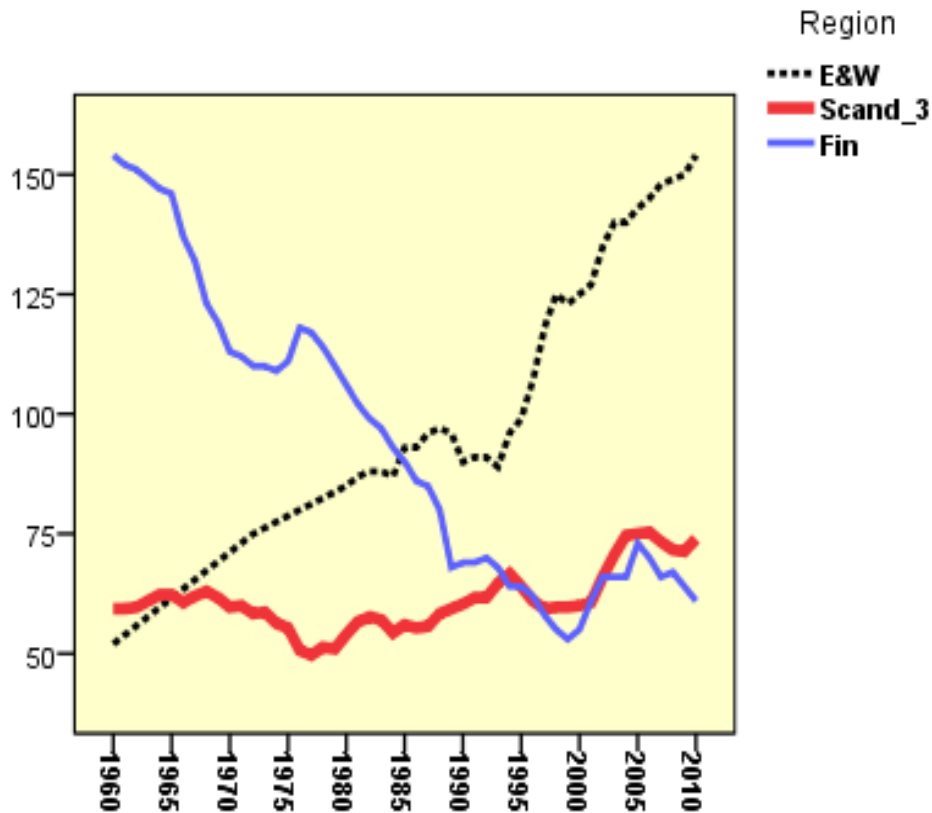
Four Scandinavian Countries 1950-2005



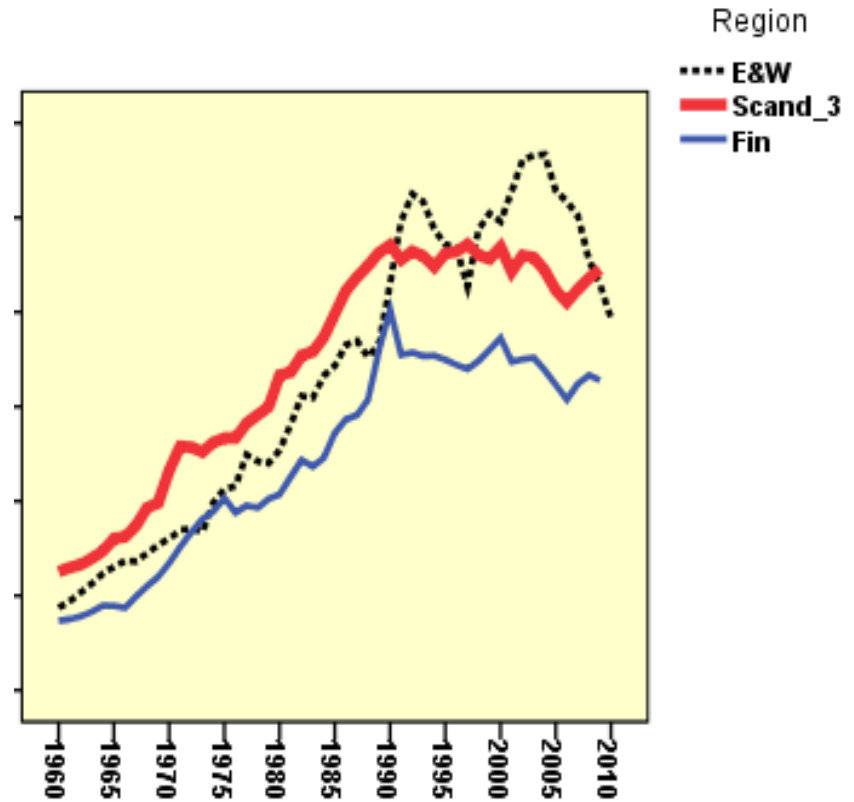
CRIME AND IMPRISONMENT IN THE NORDIC COUNTRIES AND ENGLAND & WALES 1960-2010

Three different prison profiles, and three similar crime profiles

Prisoners /100 000 pop



Recorded crime / 100 000 pop



Homicide and incarceration. No overall correlation, but possible regional patterns

Victimization: No notable correlation

